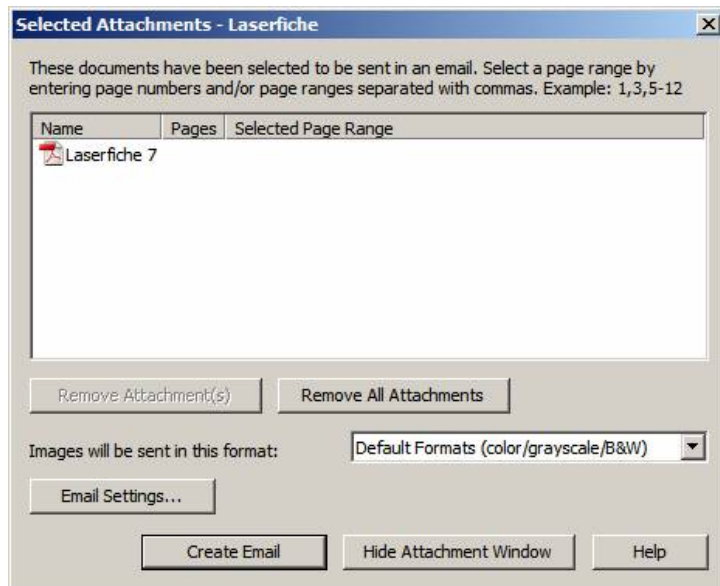
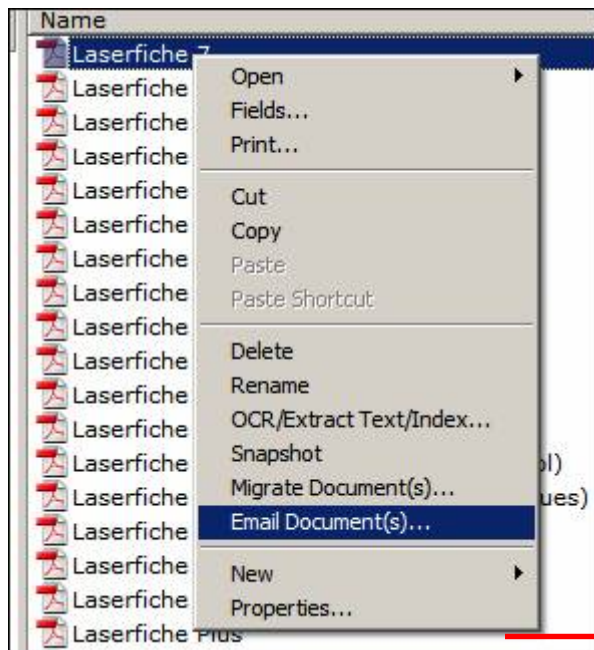


Attach Plus & Laserfiche

The Laserfiche email Plug-in sends a MAPI command to Attach Plus. See below for how the procedure works.



Step 1. Right Click document, click Email Documents



Step 2. After clicking on Create Email, Attach Plus comes into play. Works great with any document format for creating 128-bit encrypted PDFs. Automatically places attachment in email message.

Note: If Multiple documents are attached, Merge Multiple PDF and Bookmarks checkboxes will appear.

